

the *Jamestown*

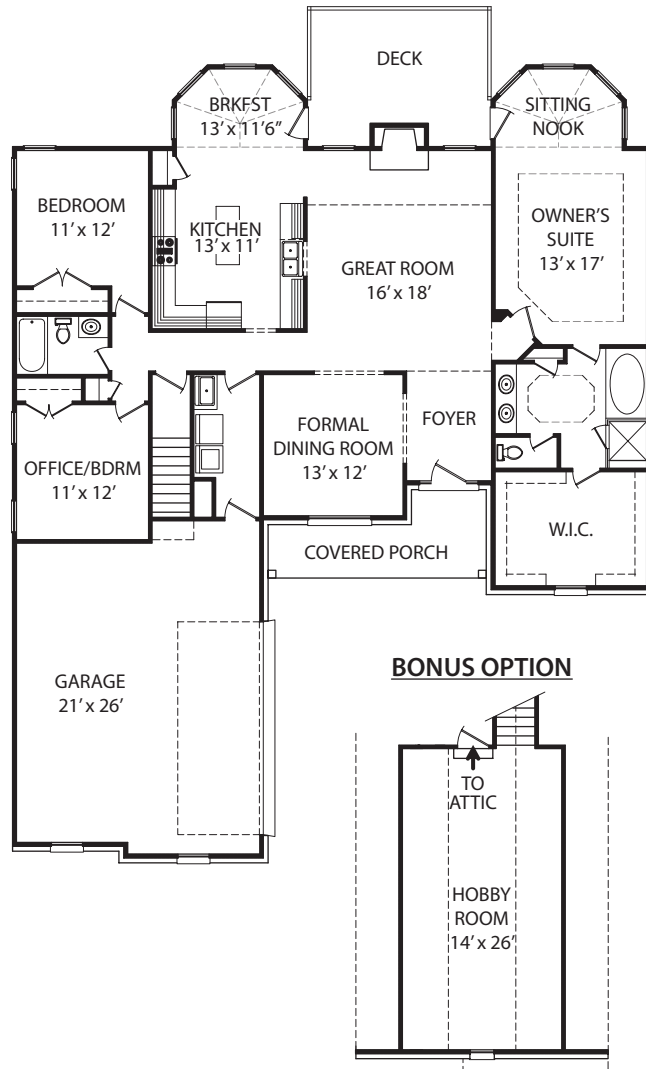
Main 1,942 sqft.

Bonus 373 sqft.

3 Bedrooms, 2 Baths

Oversized 2-Car Garage

Covered Porch &
Rear Deck



Walk-up Bonus and Brick Crawlspace Options Available as Shown. Front Porch Options Available per Elevation.
Bonus Option includes Hobby Room as Shown or may include Bedroom & Bath Suite.

The *Discovery*
COLLECTION

For more information, please contact a Province Grande Sales Associate at
(919) 554-0166 or online at www.provincegrande.com.

*Coming
Soon!*

ELEVATION I



ELEVATION II

- ❧ Craftsman style
- ❧ Low maintenance brick and board & batten exterior
- ❧ Custom trimwork and masonry window-top details
- ❧ High-pitch dutch hip roof with bronzed accents
- ❧ Covered front porch
- ❧ Carriage-style garage entrance

*Coming
Soon!*

ELEVATION III

All brick options available in each elevation. Price per plan.
Elevation shown on crawlspace with brick foundation.

For more information, please call (919) 554-0166 or visit www.provincegrande.com.